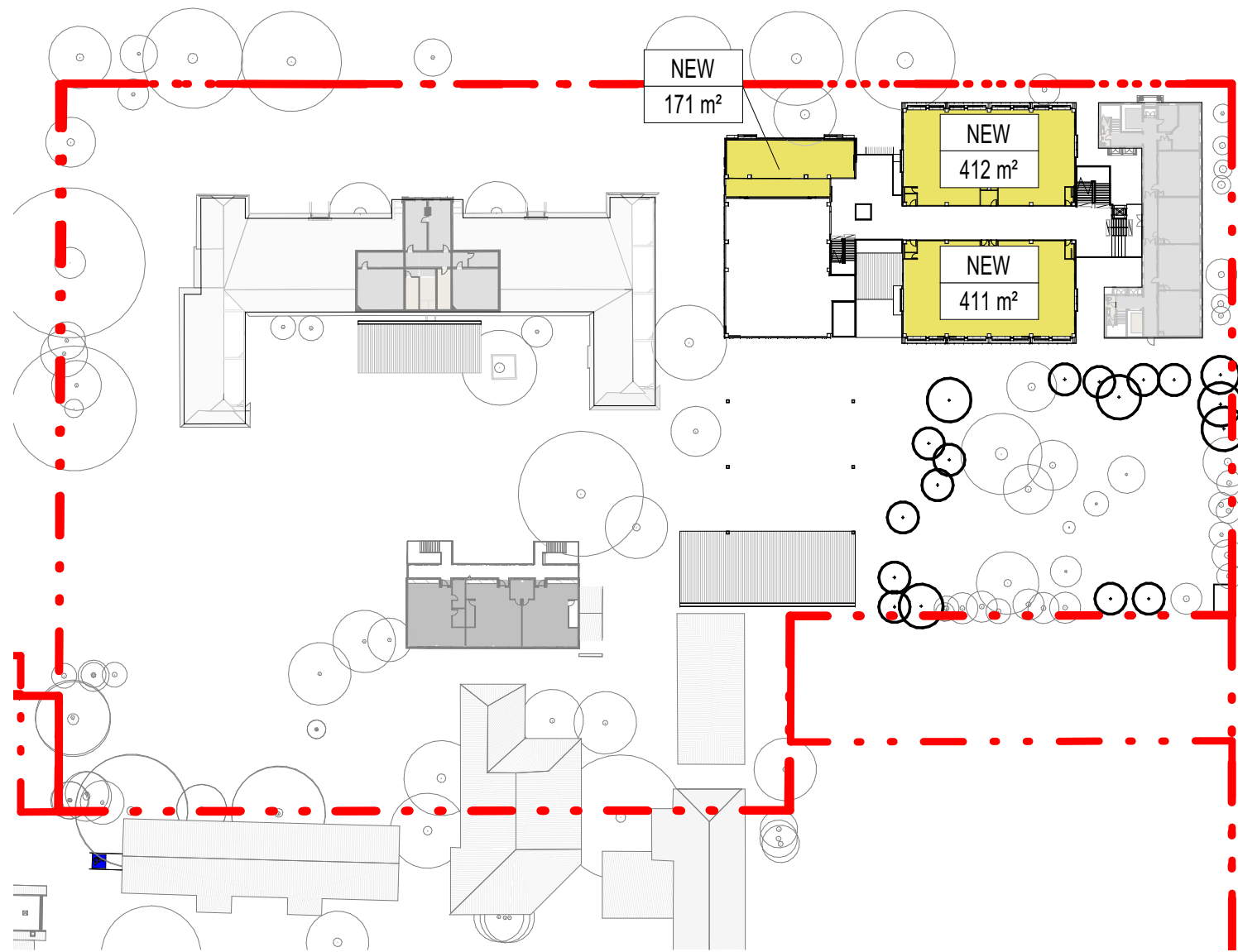
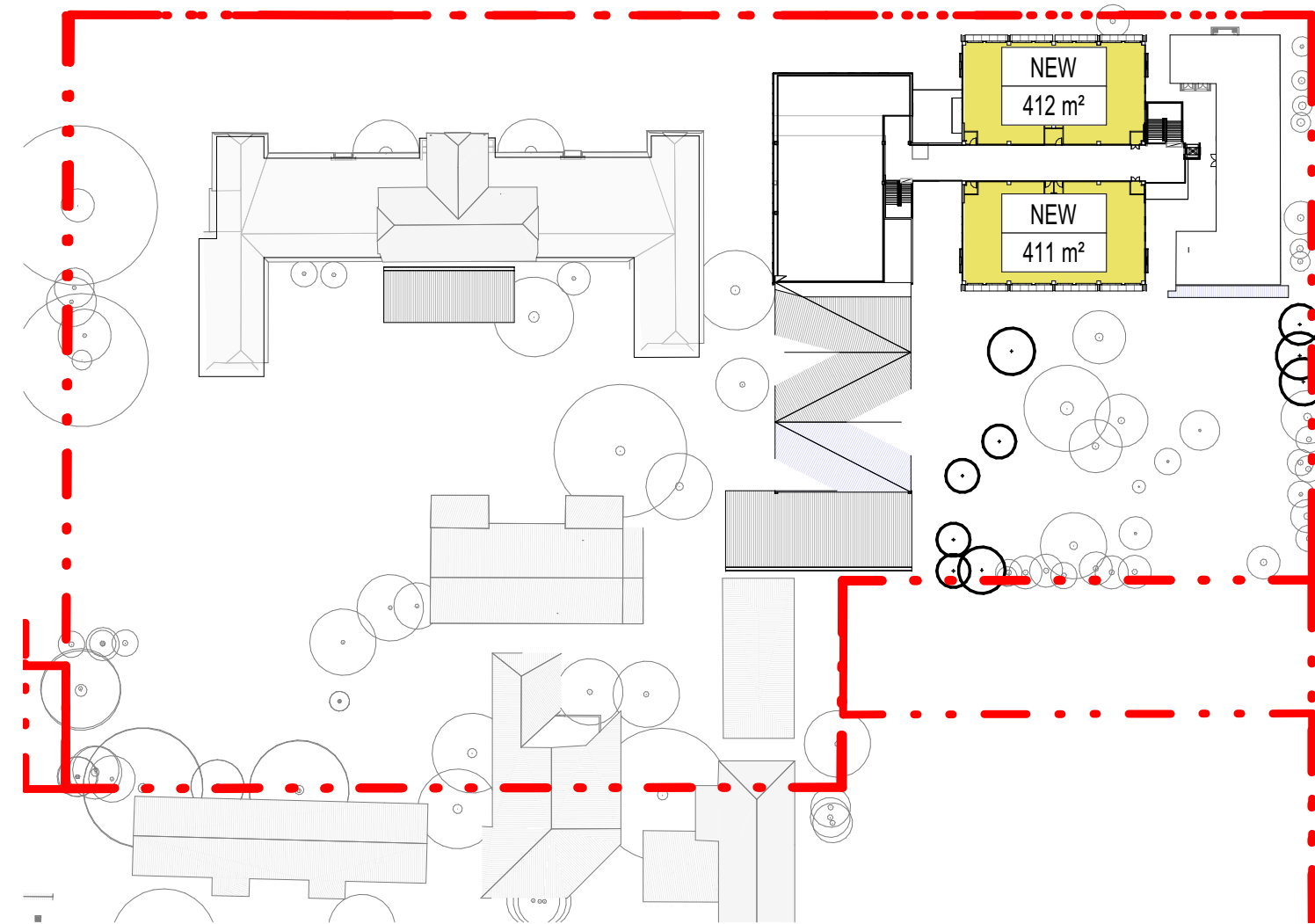


1 PS Main Building Ground Floor
3001 1 : 1000



2 PS Main Building Level One
3001 1 : 1000



3 PS Main Building Level Two
3001 1 : 1000

NEW BUILDING GROSS FLOOR AREA		
Level	Name	Area
PS Main Building Ground Floor	EXISTING BUILDING	2059 m²
PS Main Building Level One	EXISTING BUILDING	865 m²
EXISTING BUILDING		2924 m²
PS Main Building Ground Floor	EXISTING BUILDING GHS	451 m²
EXISTING BUILDING GHS		451 m²
PS Main Building Ground Floor	NEW	1614 m²
PS Main Building Level One	NEW	995 m²
PS Main Building Level Two	NEW	824 m²
NEW		3432 m²
Grand total		6808 m²

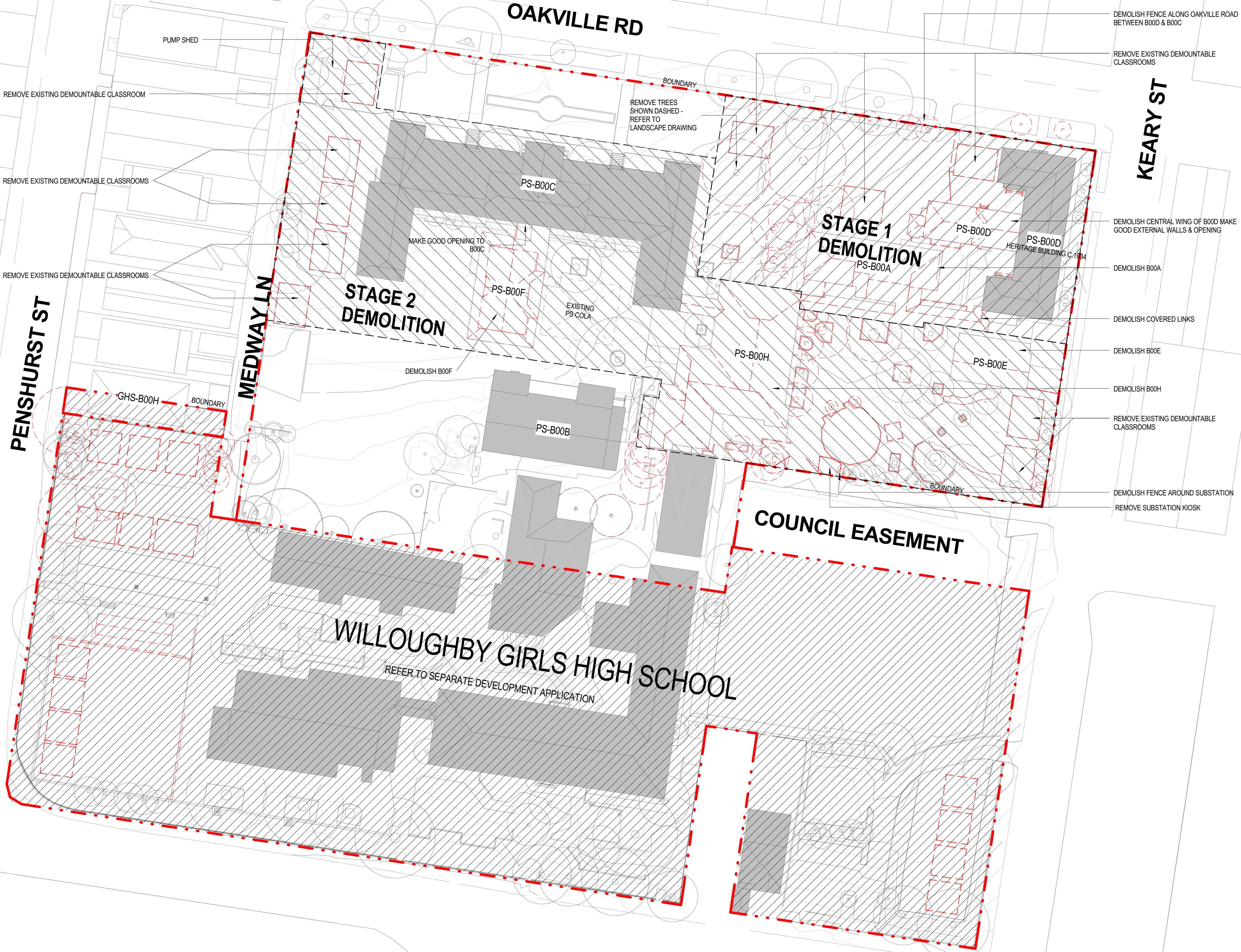
NEW LANDSCAPE AREA		
Level	Name	Area
PS Main Building Ground Floor	EX. Landscape	1818 m²
		1818 m²
PS Main Building Ground Floor	Landscape	799 m²
		799 m²
Grand total		2617 m²

SITE AREA = 19596 m2

TOTAL GROSS FLOOR AREA= 6808 m2

FSR = 0.34 : 1

TOTAL LANDSCAPE AREA = 2617 m2 - 13% of site area



DEMOLISH FENCE ALONG OAKVILLE ROAD
BETWEEN B00D & B00C

REMOVE EXISTING DEMOUNTABLE
CLASSROOMS

KEARY ST

DEMOLISH CENTRAL WING OF B00D MAKE
GOOD EXTERNAL WALLS & OPENING

DEMOLISH B00A

DEMOLISH COVERED LINKS

DEMOLISH B00E

DEMOLISH B00H

REMOVE EXISTING DEMOUNTABLE
CLASSROOMS

DEMOLISH FENCE AROUND SUBSTATION
REMOVE SUBSTATION KIOSK

REMOVE EXISTING DEMOUNTABLE CLASSROOM

REMOVE EXISTING DEMOUNTABLE CLASSROOMS

REMOVE EXISTING DEMOUNTABLE CLASSROOMS

PENSHURST ST

MEDWAY LN

STAGE 2
DEMOLITION

STAGE 1
DEMOLITION
PS-B00A

WILLOUGHBY GIRLS HIGH SCHOOL
REFER TO SEPARATE DEVELOPMENT APPLICATION

COUNCIL EASEMENT

DEMOLITION WORKS

Demolition is to be undertaken in two stages as follows:

Stage 1 - Demolition of building PS-B00A and covered walkway and part of building PS-B00D to facilitate construction of new three storeys building and refurbishment of existing heritage building PS-B00D

Stage 2 - Following completion of the new three storeys building, demolition of building PS-B00E, PS-B00H and part of building PS-B00F to enable completion of new multipurpose court, new landscaping, new amenities area and refurbishment of building PS-B00B ground floor.

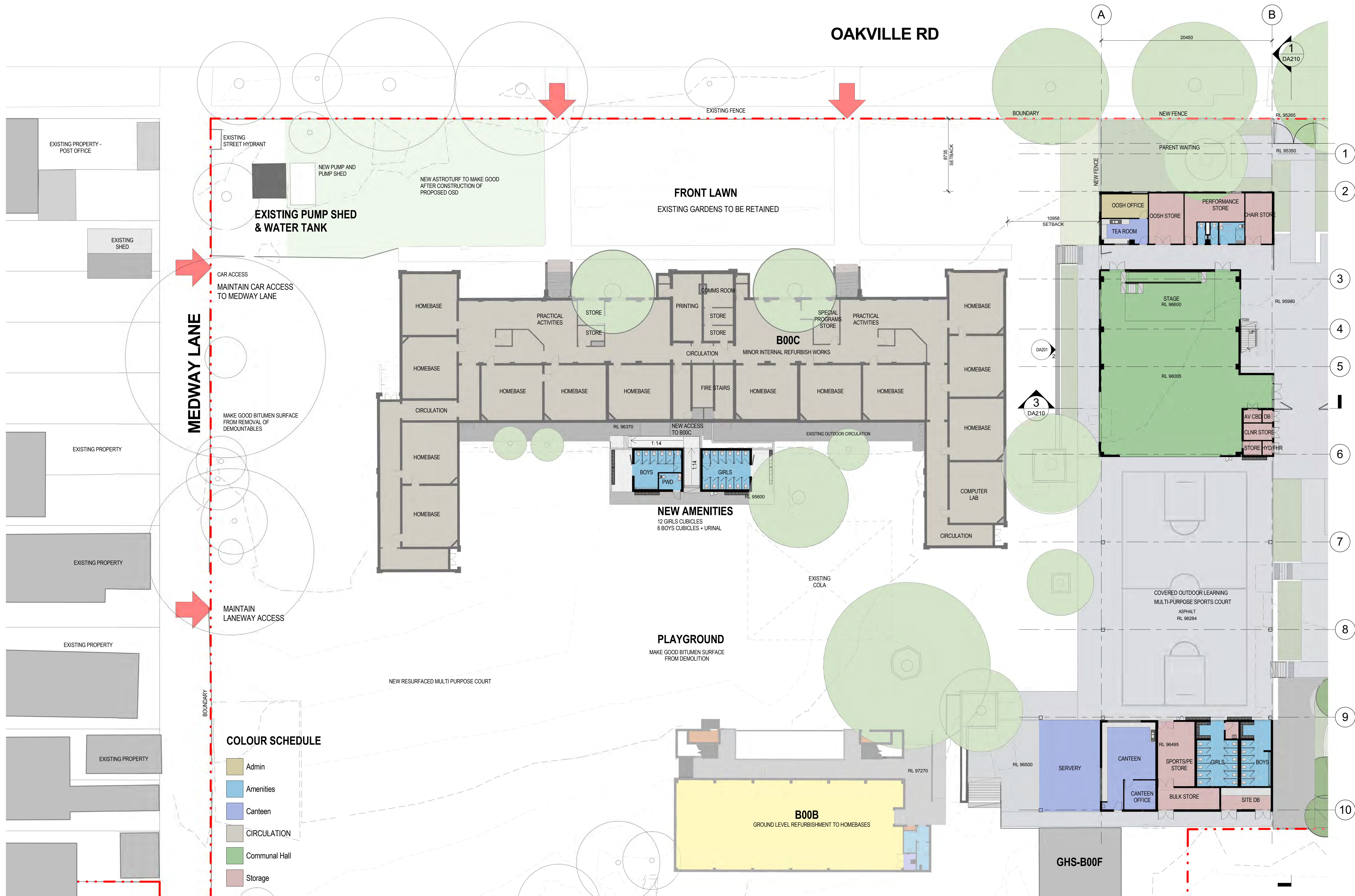
Demolition recycling, etc.... to be undertaken generally as outlined in waste management plan Section 1 - Demolition.

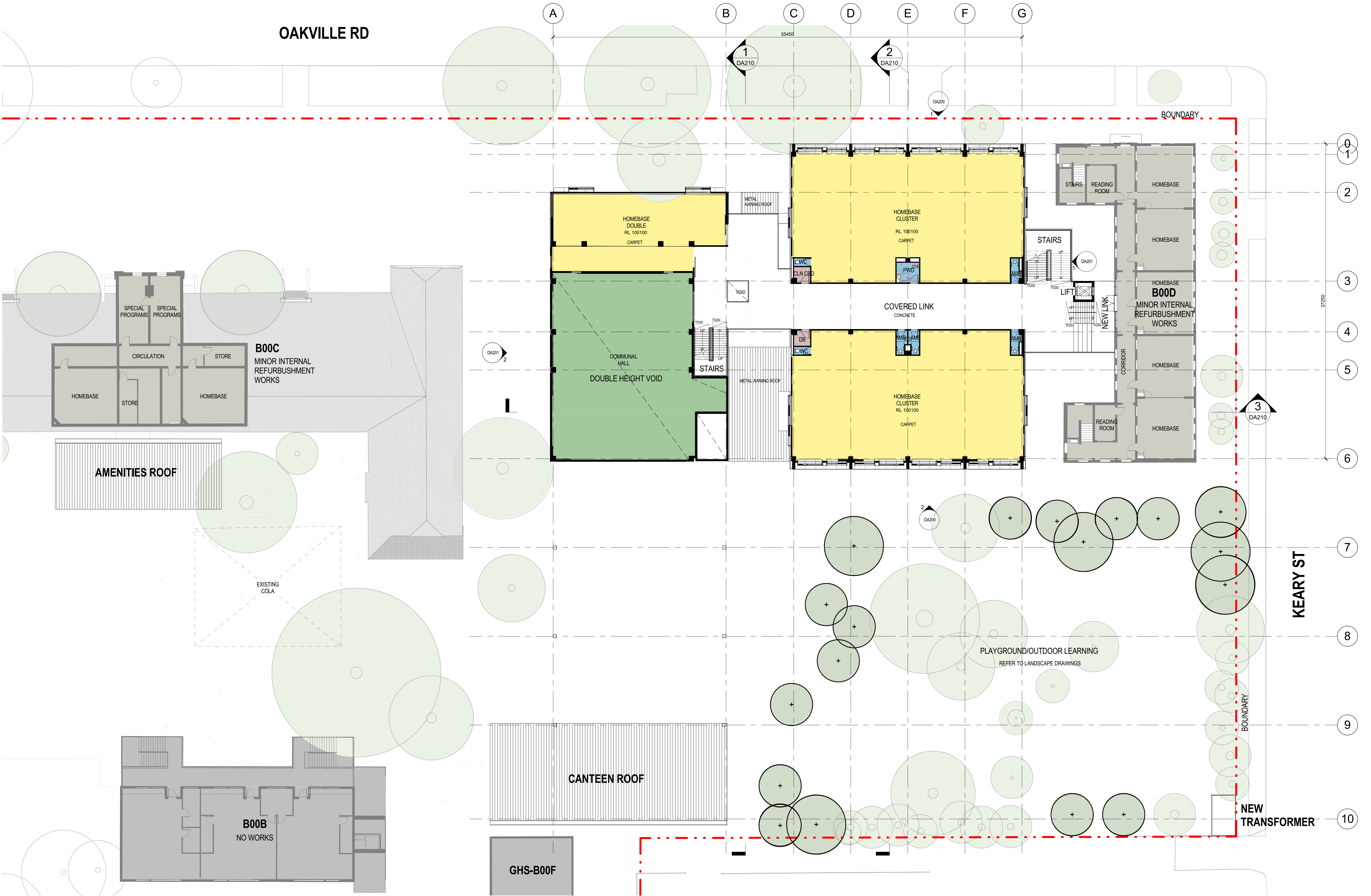
DEMOLITION NOTES

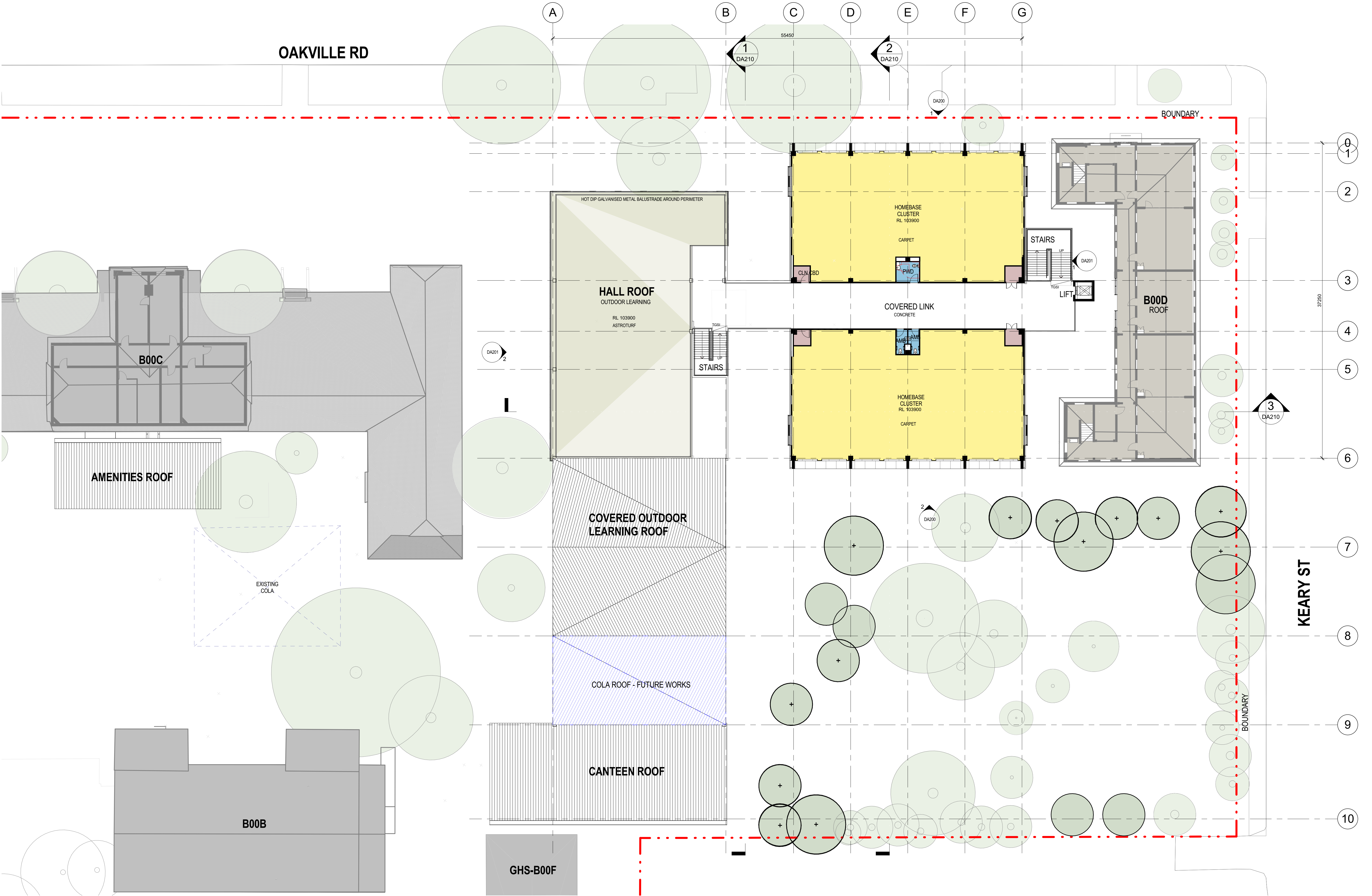
- All demolition to be carried out to requirements in AS2601.
- Laws & Authorities: Comply with all WHS and environment laws; give all required notices and pay associated fees (if any).
- Confirm all existing building conditions on site prior to commencement of works.
- Demolition works are to include all miscellaneous fittings and fixtures.
- Wall, ceiling, floor and roof removal to include elements contained therein u.n.o.
- Upon completion of demolition works, clean area to receive new work.
- Remove all existing redundant conduits, service outlets and the like.
- See separate documentation in reference to hazardous materials.
- Site to be securely fenced throughout entire period of demolition.
- If hazardous materials are discovered during the course of the demolition process, suspend works and contact the building owner immediately. Before recommencing work, determine an agreed method of safe removal with owner.

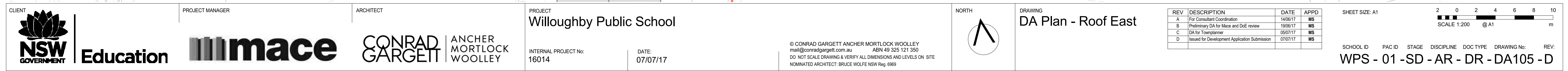
DEMOLITION LEGEND

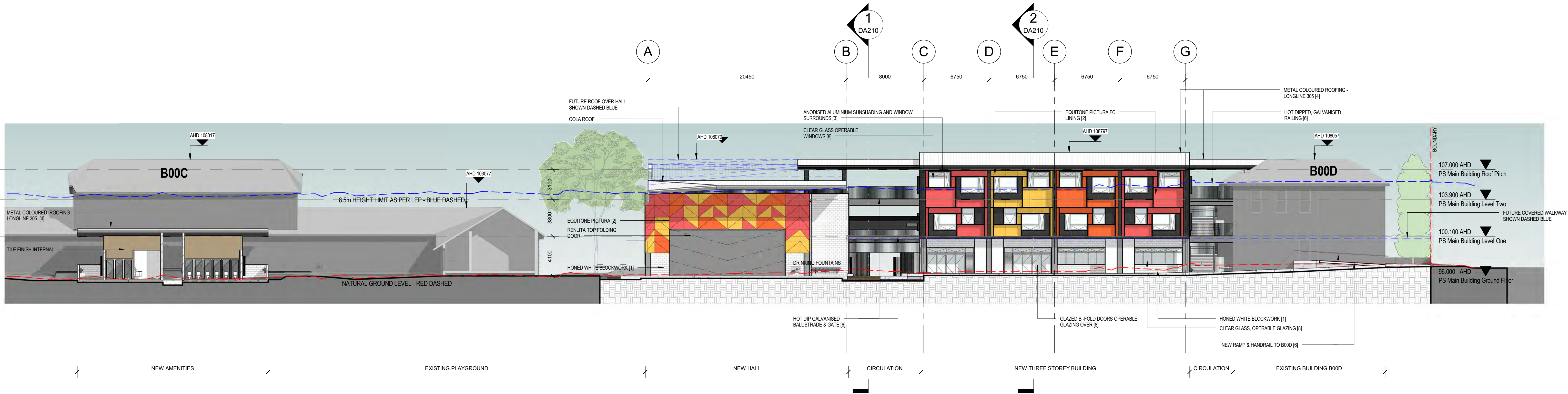
--- Denotes Items to be Demolished



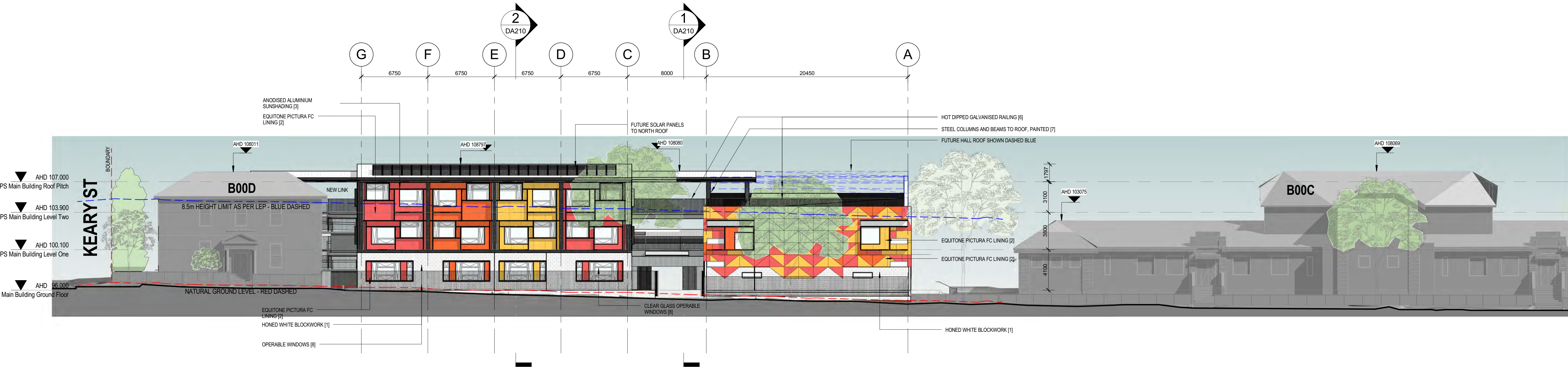




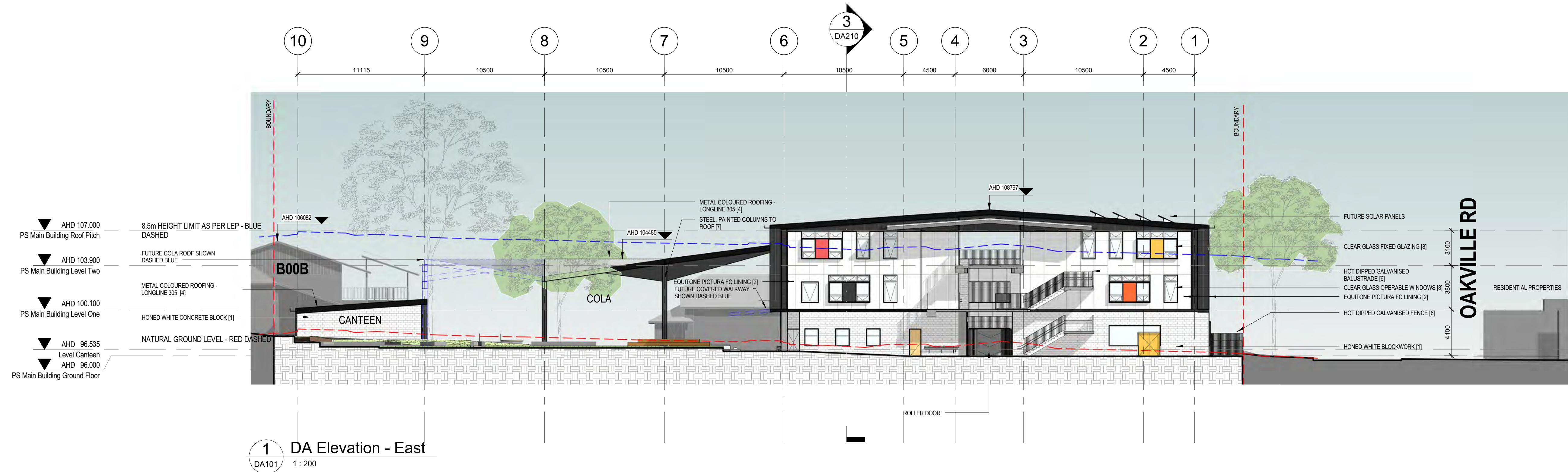
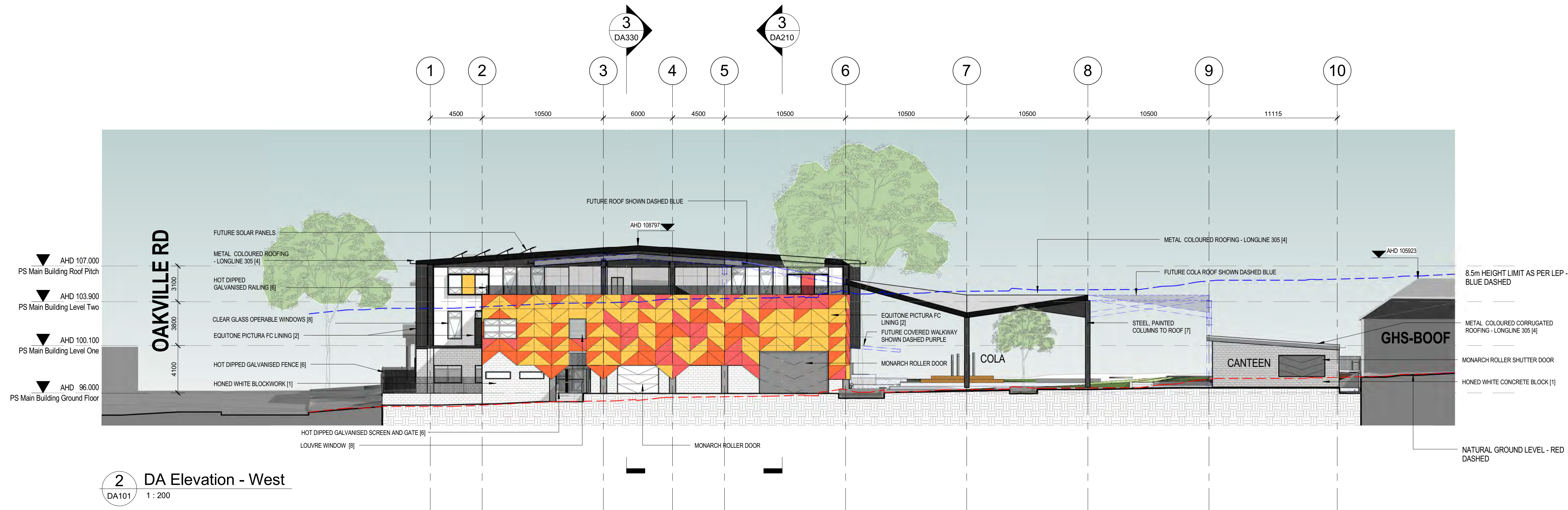


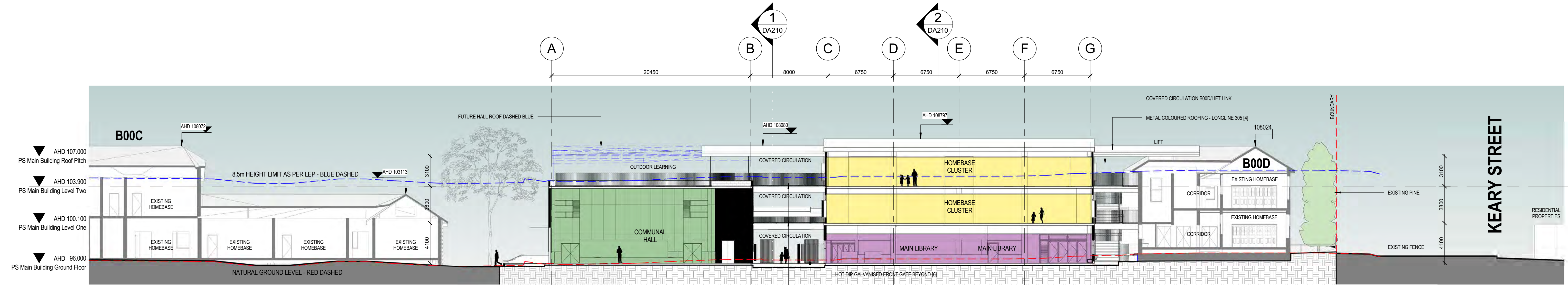


2 DA Elevation - South
DA101 1 : 200

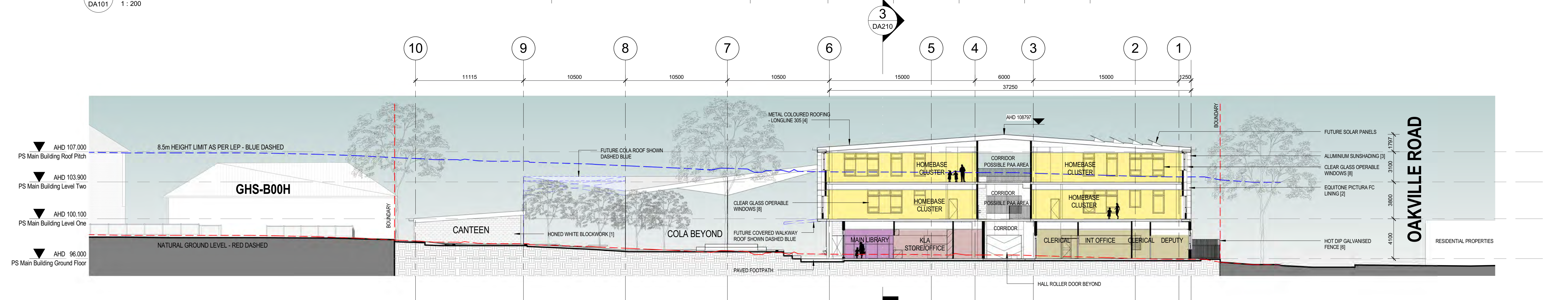


1 DA Elevation - North
DA101 1 : 200

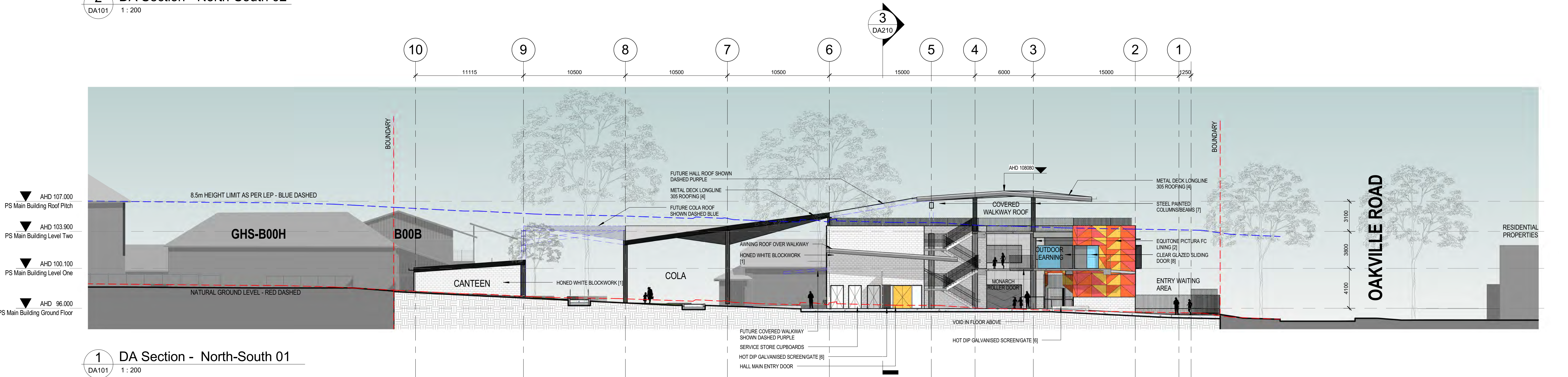




3 DA Section - East-West 01
DA101 1 : 200

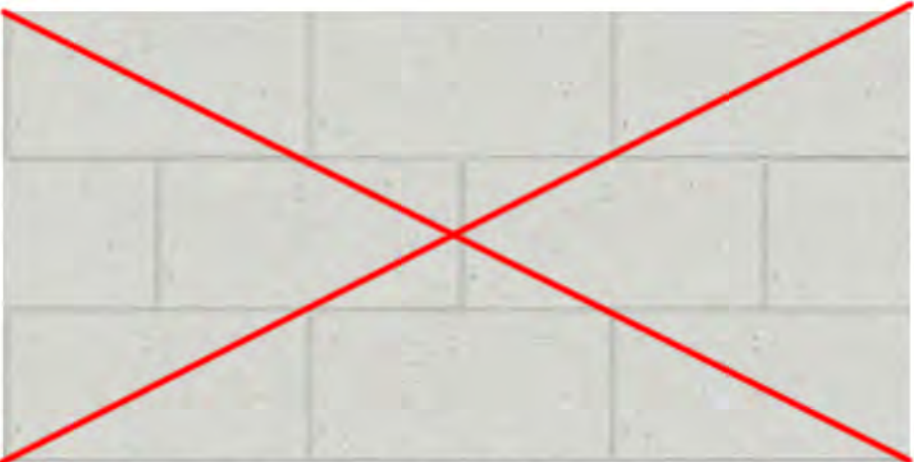


2 DA Section - North-South 02
DA101 1 : 200



1 DA Section - North-South 01
DA101 1 : 200

FACADE MATERIALS



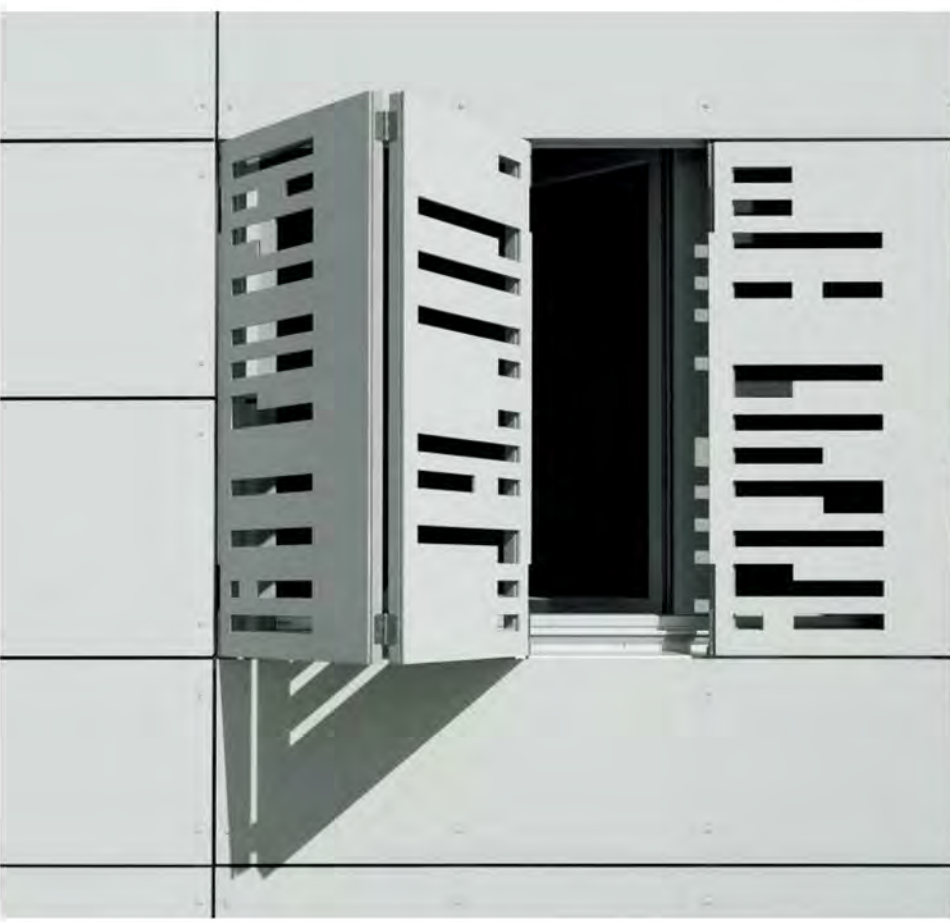
FULL HEIGHT HONED BLOCK PROPOSED ORIGINALLY



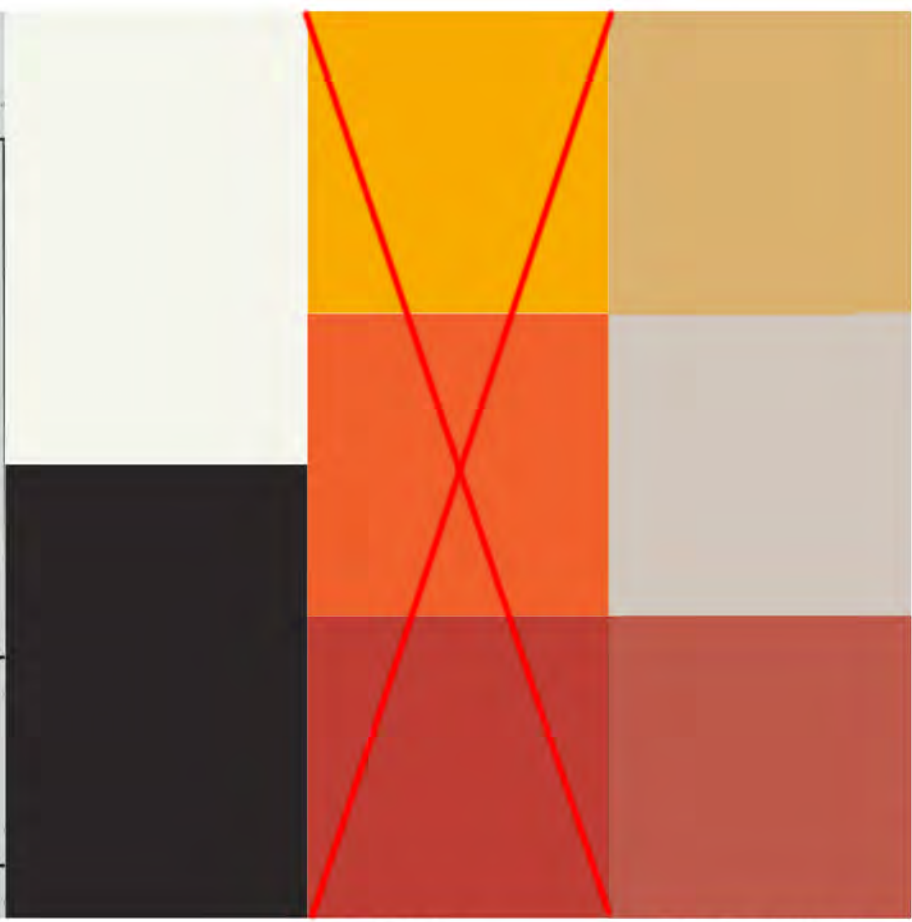
FINISH: GB HONED PORCELAIN GB HONED PEWTER

PROPOSED HALF HEIGHT HONED BLOCK

1 FACE BLOCKWORK - AUSTRAL BRICKS

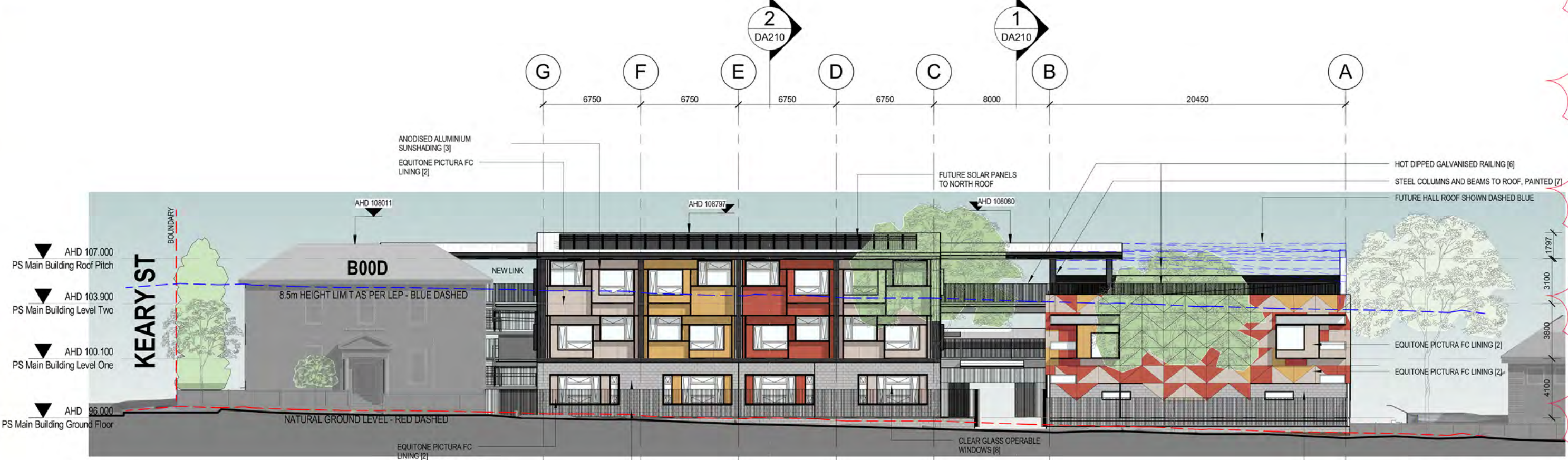


2 EXTERNAL WALL CLADDING - EQUITONE PICTURA
COLOURS: PW141, PA041, TE10, TE30, N331



ORIGINAL
COLOUR
PROPOSAL

REVISED TONED
DOWN COLOUR
PROPOSAL



NORTH ELEVATION - OAKVILLE ROAD - REVISED COLOUR ELEVATION

ROOF MATERIALS



3 MAIN ROOF SHEETING - LYSAGHT LONGLINE 305
COLOUR: COLORBOND SURFMIST



4 POLYCARBONATE ROOF SHEETING - SIMILAR TO EVERBRITE



5 EXTERNAL SUN SHADING - LOUVRECLAD CAPRICE SERIES
FINISH: ANODISED SATIN CHARCOAL GREY

DOORS AND WINDOWS



6 ALUMINIUM FRAMED WINDOWS AND GLAZED LOUVRES
FINISH: CLEAR ANODISED FINISH & CLEAR GLASS



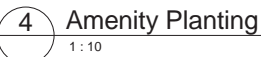
METALWORK



7 METAL BALUSTRADE / NEW FENCE
FINISH: HOT DIP GALVANISED



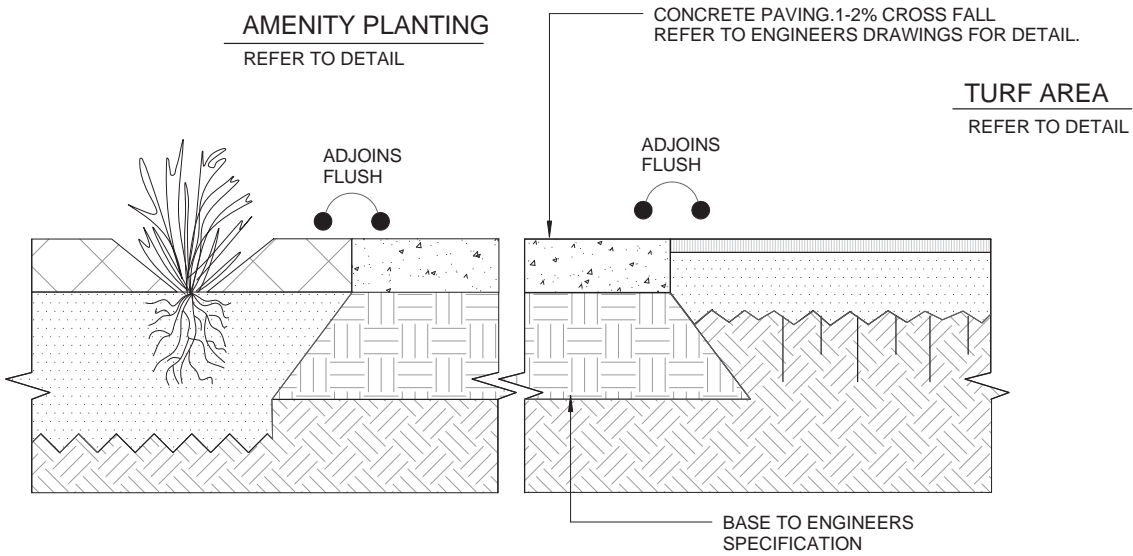
8 EXPOSED STEEL BEAMS/COLUMNS
FINISH: PAINTED DULUX DOMINO



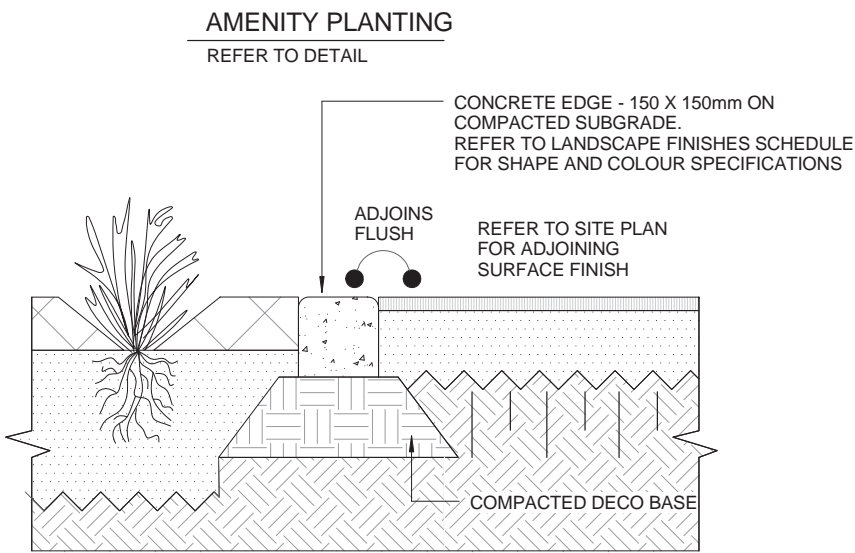
REV	DESCRIPTION	DATE	APPD
A	DA Issue	03/07/2017	KNW

SCHOOL ID	PAC ID	STAGE	DISCIPLINE	DOC TYPE	DRAWING No.	REV.
-----------	--------	-------	------------	----------	-------------	------

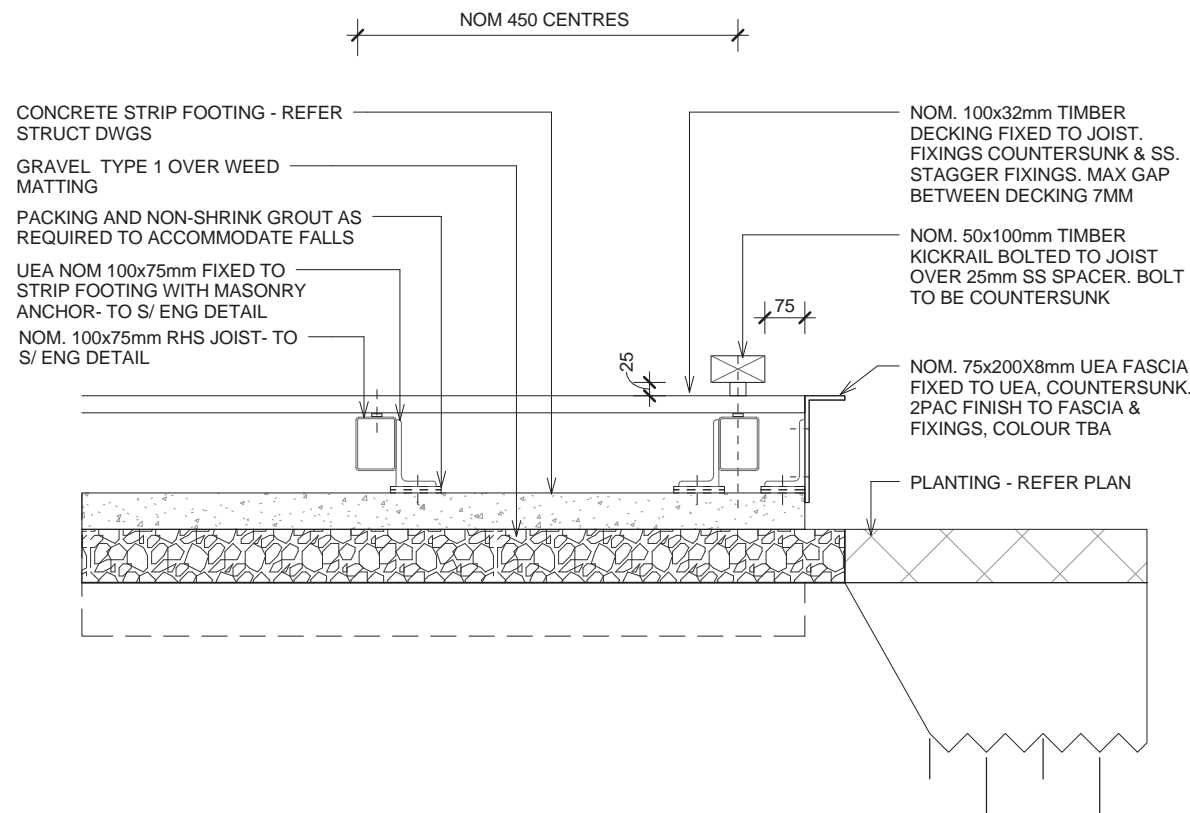
WPS - 01 -SD - LU - DR - DA501 - A



1 Pavement to Turf and Planting Interface
1 : 10



2 CE Concrete Edge
1 : 10



3 Timber Deck
1 : 10

LEGEND

Symbol	Type
<div><div></div><div></div><div></div><div></div><div></div></div>	Extent of Works

Legend Schedule - Hardscape							
Type	Pavement Type	Supplier (or approved equivalent)	Size	Colour	Sealer	Reference	
<div><div>AS</div></div> AS-Asphalt	Asphalt	N/A	Refer Civil Detail	Asphalt	N/A	Refer to Details	
<div><div>G1</div></div> G1 - Gravel Type 1	Gravel		20-40mm washed river pebble -minimum 100mm Deep		N/A	Refer to Details	
<div><div>P1</div></div> P1- Pavement Type 1	Standard Paths	N/A	Refer Civil Detail	Plain grey concrete - Standard aggregate	N/A	Refer to Details	
<div><div>SF2</div></div> SF3 - Sand Softfall	Sand	N/A	Sandsoftfall - Min 200mm Deep on 100mm Drainage Gravel	Sandsoft Fall	N/A	Refer to Details	
<div><div>TCSI 1</div></div> TGSI 1 Tactile Paver	Tactile Indicator - Unit paver	Chelmstone	300 x 300 x 40mm on 100mm slab	Voodoo	2 Coats - Know-How Technologies - Deapseal 50	Refer to Details	
<div><div>P12</div></div> Timber Deck Terrace	Timber deck	N/A	Refer Detail	TBC	2 Coats - Know-How Technologies - Deapseal 50	Refer to Details	
<div><div>WT1</div></div> WT1- Terrace Wall 1	Terrace	N/A	Refer Detail	Plain grey concrete - Standard aggregate	N/A	Refer to Details	


Legend Schedule - Edging			
Type	Symbol	Description	Reference
<div><div>CE</div></div> CE - Concrete Edging	CE	Concrete Edge	08/0501

Legend Schedule - Softscape					
Type	Pavement Type	Description	Mulch	Plant Stock/Turf	Reference
<div><div>PA1</div></div> PA1 - Planting Type 1	Planting Type 1	Amenity Planting Areas	100mm Imported Mulch	Planting as per Planting Plans	Refer to Details
<div><div>T5</div></div> T5 - Turf 5	Turf Type 5	Artificial Turf	N/A	TBC	Refer to Details
<div><div>MA</div></div> Tree Pit Mulch		2m Dia Mulch Ring to Trees in Turf	100mm Imported organic Mulch As Specified.		Refer to Details

TREES



Eleocharpus reticulatus
BLUEBERRY ASH



Jacaranda mimosifolia
JACARANDA



Lophostemon confertus
BRUSH BOX

SHRUBS



Banksia spinulosa
HAIRPIN BANKSIA
200mm min. pot size



Doryanthes excelsa
GYMEA LILY
200mm min. pot size



Gardenia floribunda
GARDENIA
200mm min. pot size



Juniperus conferta
SHORE JUPITER
200mm min. pot size



Lomandra longifolia
MAT-RUSH
140mm min. pot size




Phormium tenax
NEW ZEALAND FLAX
200mm min. pot size



Themeda australis
KANGAROO GRASS
140mm min. pot size

GROUND COVERS
AND TURF



Viola hederacea
NATIVE VIOLET
140mm min. pot size

Planting Schedule - Trees							
Code	Botanical Name	Common Name	No. Required	Description (min pot size)	Caliper	Stakes And Guys	Mature Height x Spread
ELE ret	<i>Eleocharpus reticulatis</i>	Quandong	20	200L	60	2	9 x 4 m
JAC mim	<i>Jacaranda mimosifolia</i>	Jacaranda	1	200L	60	2	10 x 8m
LOP con	<i>Lophostemon confertus</i>	Brush Box	6	200L	60	2	15 x 8 m

Planting Schedule - Shrubs and Groundcovers				
Code	Botanical Name	Common Name	Minimum Pot Size (mm)	Spacings (mm)
Ban BC	<i>Banksia spinulosa</i> cv. Birthday Candles	Birthday Candles	[200]	200
DOR exc	<i>Doryanthes excelsa</i>	Gymea Lily	[200]	600
GAR flo	<i>Gardenia floribunda</i> 'Jasminoides'	Cape Jasmine	[200]	300
JUN con	<i>Juniperus conferta</i>	Shore Jupiter	[200]	300
LOM lon	<i>Lomandra longifolia</i>	Mat Rush	[140]	500
PHO ten	<i>Phormium tenax</i>	New Zealand Flax	[200]	750
THE aus	<i>Themeda australis</i> 'Mingo'	Kangaroo Grass	[140]	300
VIO hed	<i>Viola hederacea</i>	Mat Rush	[140]	500

GENERAL PLANTING NOTES:

- Provide low maintenance planting with minimal water requirements
- Retain and protect existing trees where possible
- Provide low planting where sight lines are to be maintained (CPTED)
- Reflect the existing landscape character
- Improve school amenity and microclimate
- Provide screening and buffer planting where required